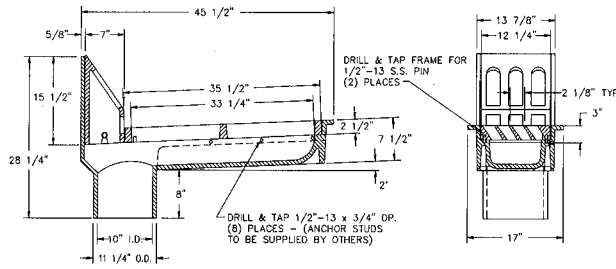


R-3943
Bridge Scupper

Heavy Duty

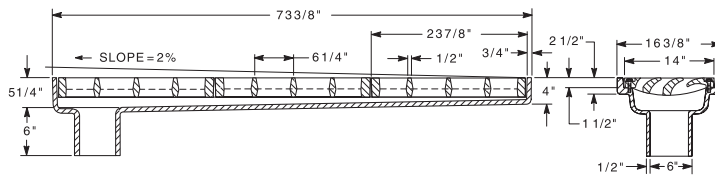


CATALOG NUMBER	GRATE TYPE	SQ. FT. OPEN	WEIR PERIMETER LINEAL FEET
R-3943	V	1.2	6.9

Grate in Ductile Iron.

R-3945
Bridge Scupper, Bolted Grates

Heavy Duty

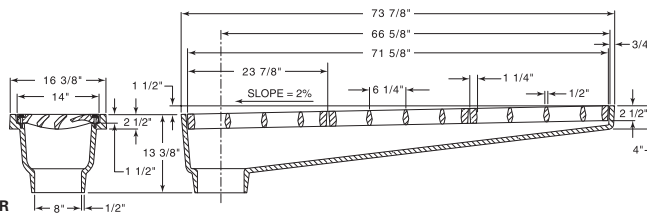


CATALOG NUMBER	GRATE TYPE	SQ. FT. OPEN	WEIR PERIMETER LINEAL FEET
R-3945	L	2.4	13.0

Specify: Spigot Outlet 6" or 8" inside diameter.
Available with -2% slope. Order as: **R-3945-2**.

R-3945-A
Bridge Scupper, Bolted Grates +2% Slope

Heavy Duty

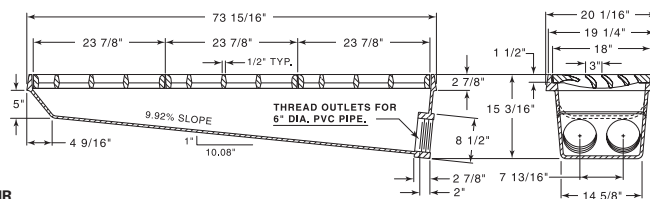


CATALOG NUMBER	GRATE TYPE	SQ. FT. OPEN	WEIR PERIMETER LINEAL FEET
R-3945-A	L	2.4	13.0
R-3945-2	L	2.4	13.0
R-3945-8	L	2.4	13.0

Available with -8% slope. Order as: **R-3945-8**.

R-3946
Bridge Scupper, Bolted Grates

Heavy Duty



CATALOG NUMBER	GRATE TYPE	SQ. FT. OPEN	WEIR PERIMETER LINEAL FEET
R-3946	L	2.9	13.5